

MOBILE HOME “LUXURY”

SLEEPS 5 (7) PEOPLE - TYPE SUPER MERCURE

FURNISHING

KITCHEN

Interior design differs slightly between each lodging.

Sink: sink, drainboard, 1 hot-water and 1 cold-water tap, cabinet below

4 gas hobs, 1 cutlery drawer below and 3 storage cupboards

1 microwave

1 suspended cupboard

Coffee machine

Dishes, cutlery and kitchen utensils (details available upon request)

Boiler (gas-powered)

1 electric convector heater

1 window



DINING AND LIVING ROOM

Interior design differs slightly between each lodging.

1 bed-sofa (2 people)

1 dining table and seating for 6 (2 chairs + bench)

1 TV bench and 1 colour TV

Wide swivelling/tilting window



BATHROOM

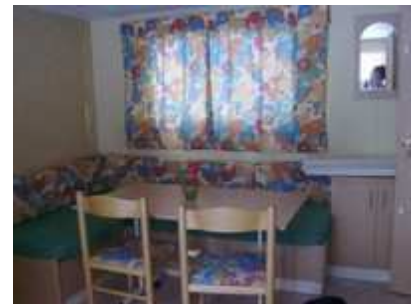
Bathroom sink with mixer tap, cabinet below

Mirror

Shower cabin: shower basin (0.8 x 0.8 m) and mixer tap

Swivelling/tilting window

Separate lavatory



DOUBLE ROOM

1 bed 140 by 200 cm, slatted frame and thick mattress (2 people)

2 bedside tables

1 wardrobe and clothes rail

Mirror

Blankets provided

1 swivelling/tilting window



CHILDREN'S BEDROOM

2 beds 80 by 190 cm, slatted frame and thick mattress (2 people)

1 bunk bed 80 by 190 for children under 10 years (only in the mobile home for 5 (7) people)

Storage shelves

Blankets provided

1 swivelling/tilting window



EXTERIOR

Canopy with dining corner and patio furniture

Panoramic view of the mountain peaks